

Table of Contents

Keys and Parts	2
Lock and Unlock the Screen	3
Make it Yours	4
Add Widgets and More Icons to Home Screen	5
Add widgets and icons to home screen.....	5
Rearrange or remove widgets and icons on your	
Home screen	5
Enter Launcher	6
Open and Switch Applications.....	6
Switch to Recently Used Application	6
Make a Call	7
Call Log	8
Reject a Call by Sending a Busy Message	9
Adding a Contact	9
Voice and Data Services	10
Send and Receive Message(s)	12
Browse the Web	14
Enjoy Music	15
Download Applications from Android Market.....	16
Email Account Configuration.....	17
Localisation and GPS	20
Manage Applications/ Move to SD card	21
Maintenance & Safety.....	22
European Directives	24

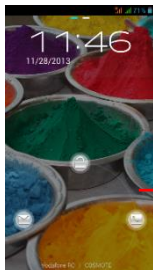
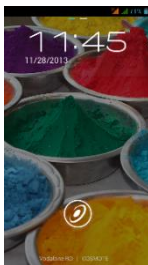
Keys and Parts

The smart phone gives you marvellous feelings to experience on Camera, Video recorder, FM radio, Music and Sound recorder. Let you install various APPs, games, and more (supports APK format) by downloading from Android Market.



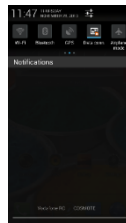
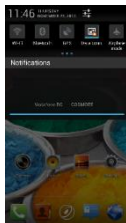
Lock and Unlock the Screen

Press power button to enter Sleep mode and meanwhile the screen will be locked; press power button again to wake up and then drag the lock to the right side to unlock.



Make it Yours

- 1) Home screen: It is your starting point to access all the features on your phone. It displays application icons, widgets, shortcuts, and other features.
- 2) Notification Bar: At the top of the screen, the Status bar displays the time, status, and notifications. If there is a new message, missed call or something in the notification bar, you can drag it down to open notification panel and click the desired one to have a view. When you finished, you can close it by dragging the panel up or pressing "Back".
- 3) Launcher: Touch the Launcher icon at the bottom of the screen to view all installed applications



Add Widgets and More Icons to Home Screen

Add widgets and icons to home screen

Enter Launcher and long press and hold an application till the app displays on the home screen, and then release your finger hold.

Rearrange or remove widgets and icons on your Home screen

a). Long press and hold the widget or icon you want to move. Once "Remove" appears, don't release your hold on the icon and drag the widget or icon to a new location on the screen. b). Press and hold on icon for several seconds, and drag the widgets or icon to remove!

Touch and hold the app.



Enter Launcher

Open and Switch Applications

The Launcher holds icons for all of the applications on your phone, including any application that you downloaded from Android Market or other sources. On the Home screen, touch the Launcher Icon to open the main menu.

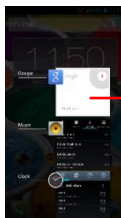



Slide the Launcher left or right to bring more icons into view.

Touch an application to open it.

Press Home icon or Back icon to close the Launcher.


Switch to Recently Used Application

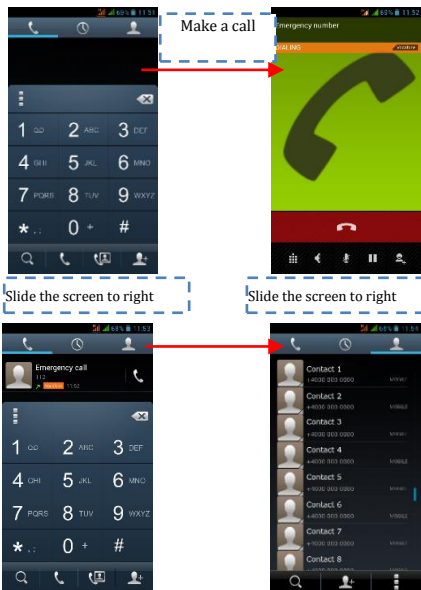


Press and hold the  icon for a few seconds.

Touch to open the application

Make a Call

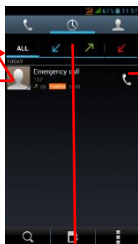
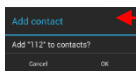
On the start screen choose  and enter a complete phone number to make a call.



Call Log

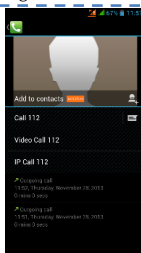
In call log options, you can Make a call, add new contact and send message etc.

Short press this place to add the new Contact.



Touch the icon to dial out.

Touch the icon to view details of this call log.



Reject a Call by Sending a Busy Message

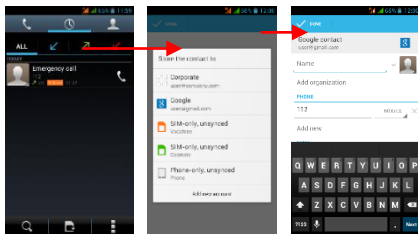
While there is an incoming call, you are inconvenient to accept the call, and then you can send a busy message for rejecting the call.

Drag the circle up to 🙅, some busy messages will show on the screen, short tap any of them to send out.

Adding a Contact

Tap 👤 and enter Contacts and then add a contact (see figure below.)

Tap “👤” to add a new contact to Phone or SIM card.



Voice and Data Services

SIMs:

- 1- It is necessary to clearly know what services you have attributed for each SIM,
- 2- After the SIMs have been installed and the telephone was started, it is necessary that from **Settings → SIM management** to assign the services correctly:
 - a- **Voice Call** can be assigned to any SIM,
 - b- **Video Call** shall be assigned only to the SIM with 3G data,
 - c- **Messages** can be assigned to any SIM.
 - d- **Data Connexion** shall be assigned only to the SIM with 3G data and usually it is configured as well as **Video Call**.

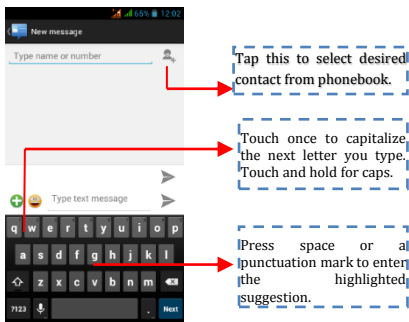
Note:

- 1- If you have an on-going call on one of the SIMs, the other will be disconnected from the network and you will not be able to receive calls on this one until you finish the initial call. If the calls you are about to receive are very important we recommend to redirect calls from one SIM to the other and to activate the **Waiting Call**.
- 2- There is the possibility that mobile phone operators to change working frequencies, in this case, the table above may no longer be valid.
- 3- APN Settings

If data service is not activated automatically after introducing the card and starting the telephone, you should manually set the APN (Access Point Name) details. These settings can be found on the official page of each mobile phone operator.

Send and Receive Message(s)

Enter **Messaging** and then compose a new message. You touch a text field where you want to enter text in order to open the keyboard.



Tap this to select desired contact from phonebook.

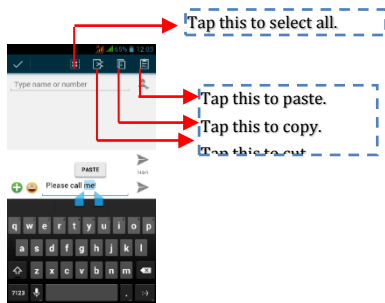
Touch once to capitalize the next letter you type. Touch and hold for caps.

Press space or a punctuation mark to enter the highlighted suggestion.

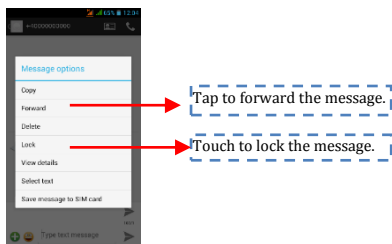
a. When you are composing a new text message, you can select text for cutting or copying. The selected text is highlighted in blue.

Touch the text field or portion that contains text. (see the below figure) You can select all contexts, copy, cut and paste.

b. When a new message comes, you can read by dragging notification panel and click the message, or entering **Message** to read it directly.



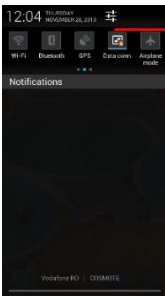
1. Long press one of the all message threads, you can delete the message thread.
2. Touch and hold a message in a message conversation window.



3. Touch **Forward** in the menu that opens.
4. Add a contact.
5. Touch **Send** icon to send the message

Browse the Web

Switch on Data connection or WiFi



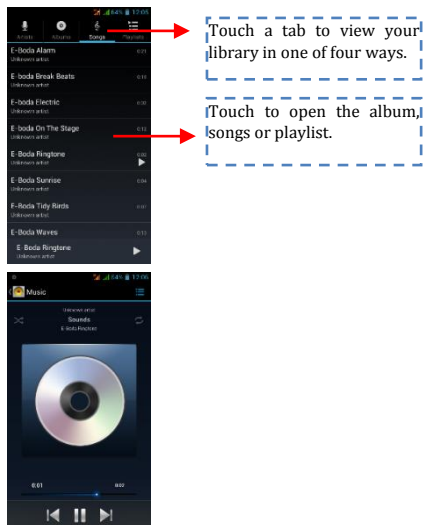
Touch it to switch on or off
Data connection

Tips: To browse the web, you need switch on Data connection.

If there is Wi-Fi around, you can switch on WiFi to use it browse the web. Some may need password.

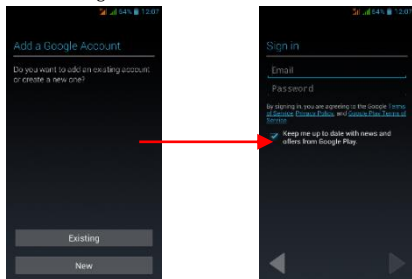
Enjoy Music

When you copy music to your SD card, the Music player searches the card for music files and builds a catalogue of your music, based on information about each file that is stored in the file itself.

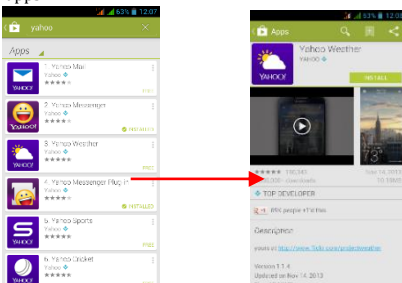


Download Applications from Android Market

a. Add a Google account



b. Enter Android Market (Play Store) and download apps.



Email Account Configuration

1- Gmail Creating an email account

Select Gmail and follow the indicated steps. You can activate or edit extended email accounts or you can create a new email account.

Select Gmail and the Google account setting interface will appear. Then select Next/Create account/Introduce the name, surname and email address.

Google servers establish if the name can be used, and if it can be used, a new interface appears, requesting the introduction of the desired passwords. Afterwards, the strength of the password will be analysed, and the users who do not comply with requests will be asked to introduce again another password.

If the registration of a new Gmail account was made successfully, a message will be automatically created for testing.

Email account loading

Open Gmail, skip the introduction screen, and load the interface.

Introduce the name, password and then load.

Email account initialization will notify that the authentication was done successfully; all Google accounts will be synchronized.

Creating and sending emails

When you wish to create and email, select Email > Create Email. Introduce the address (recipient), subject and content. Press Menu to access Add Cc/Bcc, select Send or Cancel.

Receiving Emails

When receiving a new email you will be notified by an audio tone and an icon in the status bar. Slide the status bar downward, access the new mail, press Menu > Refresh to view all new unread mails.

Deleting Emails

When you select an email account, in order to delete it, you need to return to factory settings .When you set a second email account, press Menu to delete it.

Note: many functions depend on the Gmail account, for example: Electronic Market, Google Talk, Synchroniser, Contacts and Calendar.

2- Another email account

Setting an Email account

Introduce the correct address and password, access Settings > set the right port and POP server, then verify the server settings automatically.

Set the correct SMTP server, verify the mail server settings for sending and receiving, then introduce the name of the specified account and the name displayed for outgoing emails and then save.

Creating and sending emails

When you want to send an email, select Email>Create email. Introduce the address (recipient), subject and content of the email. Press Menu to access Add Cc/Bcc, select send, cancel or save as draft.

Localisation and GPS

- Use wireless networks: check to allow device localisation through Wi-Fi networks or mobile networks;
- Use GPS satellites: check for localisation using the built-in GPS receiver;
- EPO assistance: activate to improve the localization time;
- A-GPS: activate to improve the localization time through mobile data network communication (it can lead to additional costs for data traffic);

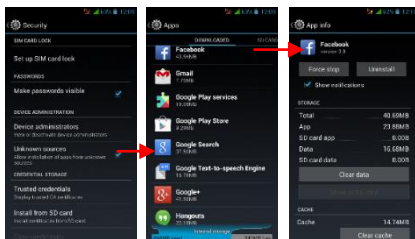
Note:

- 1- Google™ Map can be used as map but it requires permanent internet connexion,
- 2- The telephone recognises the most common maps that function OFF-LINE.

Manage Applications/ Move to SD card

Enter Setting > Apps, then manage the applications.

As you install downloaded Apps, you need switch on "Unknown sources" in Security settings.



Maintenance & Safety

Please read and observe the following information for safe and proper use of your phone and to prevent damage. Also, keep the user guide in an accessible place at all the times after reading it.

1. After sales service

Kindly refer to the Warranty Card provided in the sales package box.

2. Charger and Adapter Safety

Charger and adapter are designed for indoor use only.

3. Battery Information and Care

- Please do not disassemble the rear cover of the mobile phone, since the battery is inbuilt.
- Recharge the battery after long periods of non-use to maximize battery life.
- Battery life will vary due to usage patterns and environmental conditions.
- The self-protection function of the battery cuts the power of the phone when its operation is in an abnormal status. In this case, remove the battery from the phone, reinsert it, and turn the phone on.

4. General Notice

- Do not place items containing magnetic components such as a credit card, phone card, bank book, or subway ticket near your phone. The magnetism of the phone may damage the data stored in the magnetic strip.
- Talking on your phone for long period of time may reduce call quality due to heat generated during use.
- When the phone is not used for a long period time, store it in a safe place with the power cord unplugged.
- Using the phone in proximity to receiving

equipment (i.e. TV or Radio) may cause interference to the phone.

- Do not immerse your phone in water. If this happens, remove the battery and take it to an Authorized Service Centre.

- The suitable temperature for the phone and accessories is -10°C~45°C.

- When charging, please place the phone in an environment that has a normal room temperature and good ventilation. It is recommended to charge the phone in an environment with a temperature under 40°C. Please ensure to use only the charger offered by the manufacturer. Using unauthorized charger may cause danger and violate the authorization of the phone and the guarantee article.

- Do not paint your phone.

- The data saved in your phone might be deleted due to careless use, repair of the phone, or upgrade of the software. Please backup your important phone numbers. (Ring tones, text messages, voice messages, picture, and videos could also be deleted.) The manufacturer is not liable for damage due to the loss of data.

- Do not turn your phone on or off when the phone is close to your ear.

Warning:

Company will not bear any responsibility for any incompliance with the above guidelines or improper use of the mobile phone. Our company keeps the right to make modifications to any of the content here in this user guide without public announcement in advance. The content of this manual may vary from the actual content displayed in the device. In such case, the latter shall govern.

European Directives



CE marking is a mandatory conformity mark for products placed on market in the European Economic Area. CE Marking on a product ensures that the product complies with the essential requirements of the applicable EC directives.



This product is marked with the distinctive symbol for electrical and electronic waste selective sorting. This symbol indicates that the product must be accepted by a selective waste collection system, in accordance with the EU 2002/96/EC directive, so it can be recycled or dismantled to reduce the impact on the environment.

Attention! Electronic products that are not sorted selectively may affect the environment and people's health, as they may contain dangerous substances.



ROHS (Restriction on Hazardous Substances). This directive is a regulation that was implemented on 01 July 2006 and refers to restrictions on the marketing of products and electrical and electronic equipment containing hazardous substances such as lead, hexavalent chromium, cadmium, brominated biphenyl (PBB), polybrominated diphenyl ethers (PBDE).

DECLARAȚIE DE CONFORMITATE nr. 1037-EBD

Noi S.C. E-BODA DISTRIBUTION SRL, cu sediul în ILFOV, Comuna Cernica, Strada Oxigenului Nr. 2B cu Certificat de înregistrare la REGISTRUL COMERȚULUI: J 23/1641/2013, Cod Unic de Înregistrare: 16021123, în calitate de importator, asigurăm, garantăm și declarăm pe propria răspundere, conform prevederilor art. 5 din Hotărârea Guvernului nr. 1022/2002, privind regimul produselor și serviciilor care pot pune în pericol viața, sănătatea, securitatea muncii și protecția mediului, că produsul:

Denumire: Telefon Mobil

Model: Storm X450

Marca: E-Boda;

Importat din China, în anul 2014.

La care se referă această declarație nu pune în pericol viața, sănătatea, securitatea muncii, nu produce un impact negativ asupra mediului, respectă cerințele de protecție și este în conformitate cu standardele și normativele menționate mai jos:

- Directiva pentru echipamentele radio și de telecomunicații: R&TTE 199/5/CEE (HG 88/303);
- Directiva privind asigurarea utilizatorilor de echipamente de joasă tensiune 73/32/CEE, modificată de Directiva 93/68/CEE (HG 457/2003);
- Directiva privind compatibilitatea electromagnetică 89/336/CEE, modificată de Directiva 92/31/CEE și 93/68/CEE (HG 497/2003);
- Cerințele de siguranță ale Directivei Europene 2001/95/EC și a standardelor EN 60065:2002/A12:2011 și EN 60950-1:2006/A12:2011, referitoare la nivelul de decibeli emise de aparatele comercializate;
- Declarația de conformitate a producătorului,
- Produsul a fost evaluat conform următoarelor standarde: Sănătate: EN 50360, EN50361, Siguranță: EN 6596-1, EMC EN 301 489-1/-7/-17, Spectru radio: EN 301511, EN 300328;
- Produsul este marcat CE și RoHS,
- Valoare SAR: Cap 1.0W/Kg; Corp 1.05W/Kg.

DOSARUL TEHNIC este disponibil la sediul S.C. E-BODA DISTRIBUTION SRL
Declarația este întocmită în conformitate cu prevederile Anexei II a HG nr. 88/2003;

București: 05.06.2014

Director General
Emilia Burcea

